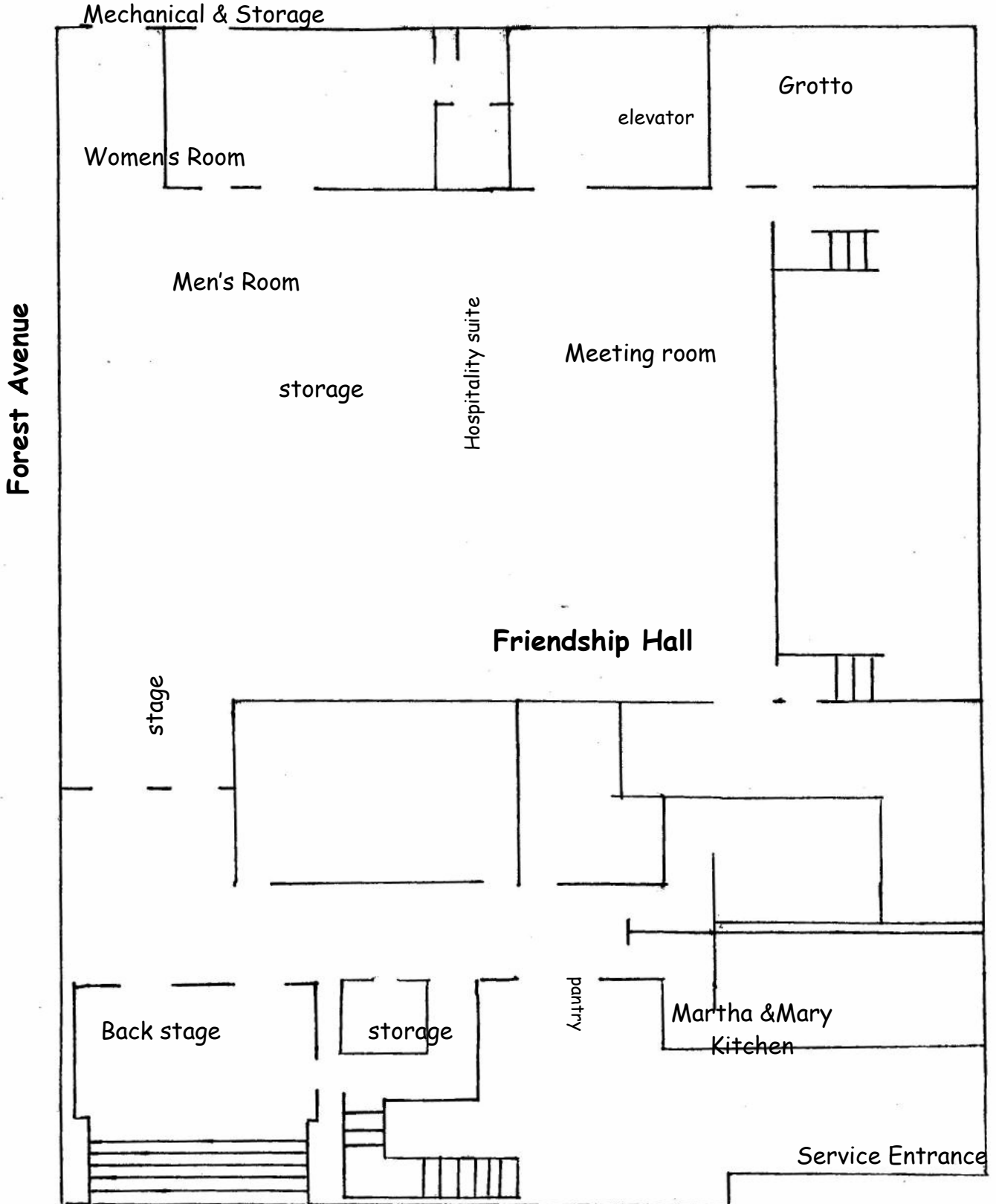


**St. Anthony
Of Padua Church**



Parking Lot

Friendship Hall Entrance



Saint Anthony of Padua Parish

Narthex- The narthex is the vestibule of our church where we meet and greet each other. It is a transitional area where we move from the activity of the outside world into the sacred space of our sanctuary.



"Here heart speaks to heart" are the words embedded in the narthex floor. The design in the center includes lilies, a traditional symbol for St. Anthony and the letter A for Anthony. The leaves of the lily form a heart which pierced by the cross are the ultimate symbols of Christian love.

Cloister Walk- A cloister is an enclosed space set apart from the world and reserved for religious life. In that spirit, our cloister walk will be used for parish activities and processions. Flanked by a stained glass communion of saints, passage through the walk reminds us that we journey together towards the kingdom.

Nave- The nave is the space reserved for the entire community as we worship together as a single body united in faith. We bless ourselves with holy water as we enter to remind us of the promises we made at baptism. Our nave is a sacred and quiet place where we find refuge from the storms of this life and grow protected in the fullness of eternal life.

Sanctuary- The altar and ambo stand together in the sanctuary. The altar is a place of sacrifice and the table around which we gather for the Eucharistic meal. God's word is proclaimed from the ambo. We encounter the Lord in both His living word and the breaking of the bread. As has been our tradition the baptistry is located in the sanctuary.

Stained Glass- The **Mysteries of the Rosary** are based on the incidents in the life of our Lord and His Mother that are celebrated in the Liturgy during the course of the liturgical year. They tell the story of the Gospel. The Joyful Mysteries are located in the Mary Chapel. The Glorious Mysteries adorn the nave wall and the Sorrowful Mysteries are found in the cloister walk.

The **Blessed Mother** and the **Sacred Heart** windows were made for the original church. They are ordered in the new sanctuary as they were in 1886.

Accompanying us in the cloister walk are windows of St. Anthony, John the Baptist, St. Paul, St. Peter, St. Anne and St. Basil.

Two new rose windows have been commissioned. The **St. Anthony Church** window is a memorial to our 118 year history and features our church as it stood before the fire. The **Divine Mercy** window communicates Jesus Christ's desire that the world accept His abundant mercy.

Mary Chapel-Daily mass, confessions, adoration, class masses, small weddings and funerals will take place in the Mary Chapel. There are votive candles to light which signify that we have entered the light of Christ. Our lit candle and the light of Christ continue to burn for us even as we go about our daily business.

There are a number of statues: St. Theresa, St. Anthony, the Blessed Mother, the Sacred Heart. We use statues to recall and remember the example of the lives depicted.

The Mary Chapel and the nave will be open through out the day. This is holy ground, a place apart to spend some quiet time in reflection and prayer.

Reconciliation Rooms-Confessionals are located in the Mary Chapel. It is in the sacrament of reconciliation that our relationships with ourselves, each other and the Lord are restored and renewed after the wear and tear of daily living.

Holy Child Room- (Formerly called the "crying room") The importance of bringing little children to the Lord is so profound that a special room has been set aside for them. This is a space where children and parents can pray in comfort. There is a restroom with changing facilities. Food and drinks for children will only be permitted in this room, not in the pews in church.

Children's Courtyard- Some of our little ones have already found their way home to the Father where he holds them close to His heart. We hold them in our hearts as well and have set aside this space to remember them. Plaques in the courtyard will be inscribed with their names.

Friendship Hall-Jesus said to us "I call you friends" (Jn 15:15). We are truly invited to be included in the friendship and love of the Trinity. The friendship and communion formed in the Eucharist upstairs will find many ways to bear fruit in social and educational activities downstairs.

Hospitality Suite-Hospitality is one of the charisms or gifts that God gives us as tools to accomplish our individual missions here on earth. This room will meet a number of basic human needs: a quiet moment for a bride before her wedding, a meeting place for the youth of our parish, a bed and a warm shower for the homeless.

Martha and Mary Kitchen-Jesus fed the multitudes and so will we from our parish kitchen. The kitchen is fully equipped for the parish's food needs. There are no plans to rent out the kitchen/hall for private events.